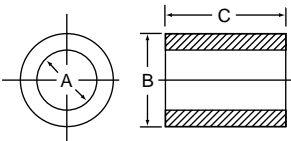




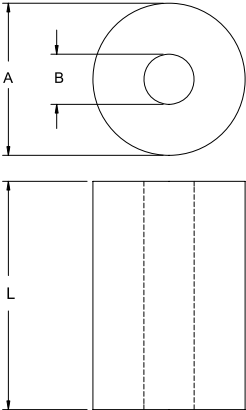
SWS Series
Standard Spacers (continued)



Item No.	A In	B In	C In	Fits	Bulk Pack Qty.
SWS1580A	0.194	0.312	0.625	#10	1000
SWS1590A	0.194	0.312	0.687	#10	1000
SWS1600A	0.194	0.312	0.750	#10	1000
SWS1610A	0.194	0.312	0.812	#10	1000
SWS1620A	0.194	0.312	0.875	#10	1000
SWS1630A	0.194	0.312	0.937	#10	1000
SWS1640A	0.194	0.312	1.000	#10	1000
SWS1650A	0.194	0.375	0.125	#10	1000
SWS1660A	0.194	0.375	0.187	#10	1000
SWS1670A	0.194	0.375	0.250	#10	1000
SWS1680A	0.194	0.375	0.312	#10	1000
SWS1690A	0.194	0.375	0.375	#10	1000
SWS1700A	0.194	0.375	0.437	#10	1000
SWS1710A	0.194	0.375	0.500	#10	1000
SWS1720A	0.194	0.375	0.562	#10	1000
SWS1730A	0.194	0.375	0.625	#10	1000
SWS1740A	0.194	0.375	0.687	#10	1000
SWS1750A	0.194	0.375	0.750	#10	1000
SWS1760A	0.194	0.375	0.812	#10	1000
SWS1770A	0.194	0.375	0.875	#10	1000
SWS1780A	0.194	0.375	0.937	#10	1000
SWS1790A	0.194	0.375	1.000	#10	1000
SWS1810A	0.194	0.500	0.125	#10	1000
SWS1820A	0.194	0.500	0.187	#10	1000
SWS1830A	0.194	0.500	0.250	#10	1000
SWS1840A	0.194	0.500	0.312	#10	1000
SWS1850A	0.194	0.500	0.375	#10	1000
SWS1860A	0.194	0.500	0.437	#10	1000
SWS1870A	0.194	0.500	0.500	#10	1000
SWS1880A	0.194	0.500	0.562	#10	1000
SWS1890A	0.194	0.500	0.625	#10	1000
SWS1900A	0.194	0.500	0.687	#10	1000
SWS1910A	0.194	0.500	0.750	#10	1000
SWS1920A	0.194	0.500	0.812	#10	1000

Item No.	A In	B In	C In	Fits	Bulk Pack Qty.
SWS1930A	0.194	0.500	0.875	#10	1000
SWS1940A	0.194	0.500	0.937	#10	1000
SWS1960A	0.194	0.500	1.000	#10	1000
SWS1980A	0.219	0.500	0.125	#12	1000
SWS1990A	0.219	0.500	0.187	#12	1000
SWS2000A	0.219	0.500	0.250	#12	1000
SWS2010A	0.219	0.500	0.375	#12	1000
SWS2020A	0.219	0.500	0.437	#12	1000
SWS2030A	0.219	0.500	0.500	#12	1000
SWS2040A	0.219	0.500	0.562	#12	1000
SWS2050A	0.219	0.500	0.625	#12	1000
SWS2060A	0.219	0.500	0.687	#12	1000
SWS2070A	0.219	0.500	0.750	#12	1000
SWS2080A	0.219	0.500	0.812	#12	1000
SWS2090A	0.219	0.500	0.875	#12	1000
SWS2100A	0.219	0.500	0.937	#12	1000
SWS2110A	0.219	0.500	1.000	#12	1000
SWS2120A	0.220	0.500	0.312	#12	1000
SWS2160A	0.257	0.500	0.312	1/4	1000
SWS2170A	0.257	0.500	0.375	1/4	1000
SWS2180A	0.257	0.500	0.437	1/4	1000
SWS2200A	0.257	0.500	0.500	1/4	1000
SWS2210A	0.257	0.500	0.562	1/4	1000
SWS2220A	0.257	0.500	0.625	1/4	1000
SWS2230A	0.257	0.500	0.687	1/4	1000
SWS2240A	0.257	0.500	0.937	1/4	1000
SWS2250A	0.257	0.500	1.000	1/4	1000
SWS2260A	0.260	0.500	0.125	1/4	1000
SWS2270A	0.260	0.500	0.187	1/4	1000
SWS2280A	0.260	0.500	0.250	1/4	1000
SWS2290A	0.260	0.500	0.750	1/4	1000
SWS2300A	0.260	0.500	0.812	1/4	1000
SWS2310A	0.260	0.500	0.875	1/4	1000

NS
NSA5527 Nylon Spacer



- Meets NSA5527 specifications
- Material: UL94 V-2 Heat Stabilized Nylon 6/6
- Color: Natural

Item No.	NSA Item No.	L Spacer Length	A O.D.	B I.D.	Bulk Pack Qty.
NS-03-07	NSA5527-03-07	.142 (3.6)	.472 (12)	.197 (5)	1000
NS-05-01	NSA5527-05-01	.158 (4)	.500 (12.7)	.268 (6.8)	1000
NS-03-04	NSA5527-03-04	.190 (4.83)	.472 (12)	.197 (5)	1000
NS-07-01	NSA5527-07-01	.197 (5)	.630 (16)	.276 (7)	1000
NS-03-03	NSA5527-03-03	.250 (6.35)	.472 (12)	.197 (5)	1000
NS-03-05	NSA5527-03-05	.312 (7.93)	.472 (12)	.197 (5)	1000
NS-04-02	NSA5527-04-02	.312 (7.93)	.472 (12)	.260 (6.6)	1000
NS-03-06	NSA5527-03-06	.375 (9.52)	.472 (12)	.197 (5)	1000
NS-03-16	NSA5527-03-16	.453 (11.5)	.472 (12)	.197 (5)	1000
NS-03-01	NSA5527-03-01	.500 (12.7)	.472 (12)	.197 (5)	1000
NS-04-01	NSA5527-04-01	.500 (12.7)	.472 (12)	.260 (6.6)	1000
NS-03-14	NSA5527-03-14	.551 (14)	.472 (12)	.197 (5)	1000
NS-03-02	NSA5527-03-02	.598 (15.2)	.472 (12)	.197 (5)	1000
NS-03-15	NSA5527-03-15	.669 (17)	.472 (12)	.197 (5)	1000
NS-03-12	NSA5527-03-12	.748 (19)	.472 (12)	.197 (5)	1000
NS-03-08	NSA5527-03-08	.787 (20)	.472 (12)	.197 (5)	1000
NS-03-13	NSA5527-03-13	.827 (21)	.472 (12)	.197 (5)	1000
NS-03-09	NSA5527-03-09	.886 (22.5)	.472 (12)	.197 (5)	1000
NS-03-11	NSA5527-03-11	.925 (23.5)	.472 (12)	.197 (5)	1000
NS-06-01	NSA5527-06-01	.984 (25)	.630 (16)	.205 (5.2)	1000
NS-06-02	NSA5527-06-02	1.18 (30)	.630 (16)	.205 (5.2)	1000
NS-08-01	NSA5527-08-01	1.18 (30)	.787 (20)	.260 (6.6)	1000
NS-03-10	NSA5527-03-10	1.83 (46.5)	.472 (12)	.197 (5)	1000